

Ministry of Agriculture
Republic of Latvia

Forest sector in Latvia



2025.



Ministry of Agriculture
Republic of Latvia

Contents

Facts about forests in Latvia

Forest policy and institutional framework

Economic, ecologic and social aspects of forests

Support for forestry

Hunting in Latvia

Europe

Sweden

Area: 528 447 km²

Population: 9.5 million

Forest area: **75 %** of Sweden's land territory

Forest area per inhabitant – 4.17 ha

LATVIA

Area: 64 589 km²

Population: 2 million

Where is

Forest area: **53 %** of Latvia's land territory

Forest area per inhabitant – 1.73 ha

Belgium

Area: 30 528 km²

Population: 11 million

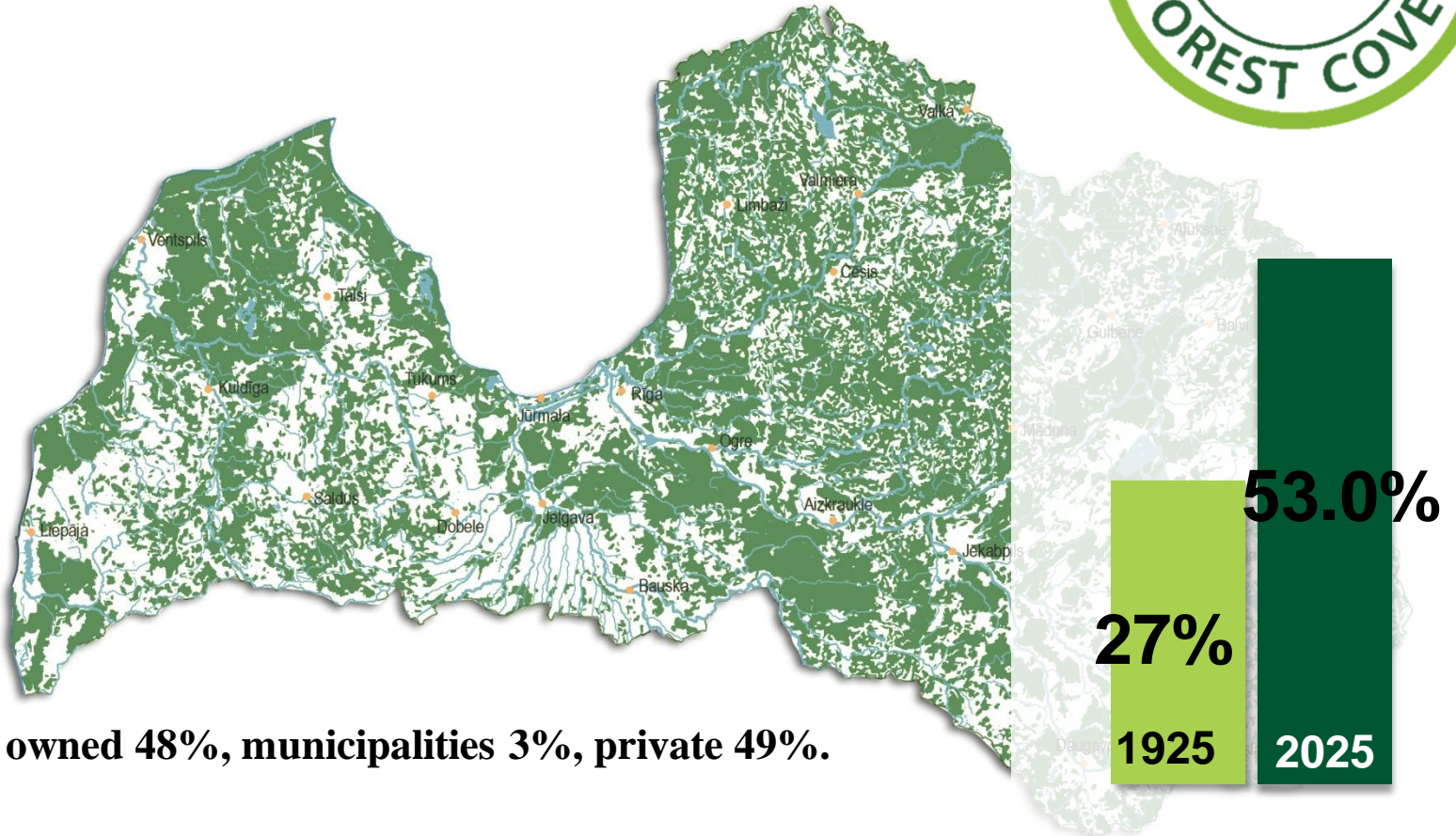
Forest area: **22 %** of Belgium's land territory

Forest area per inhabitant – 0.06 ha



Ministry of Agriculture
Republic of Latvia

Forests in Latvia 2025



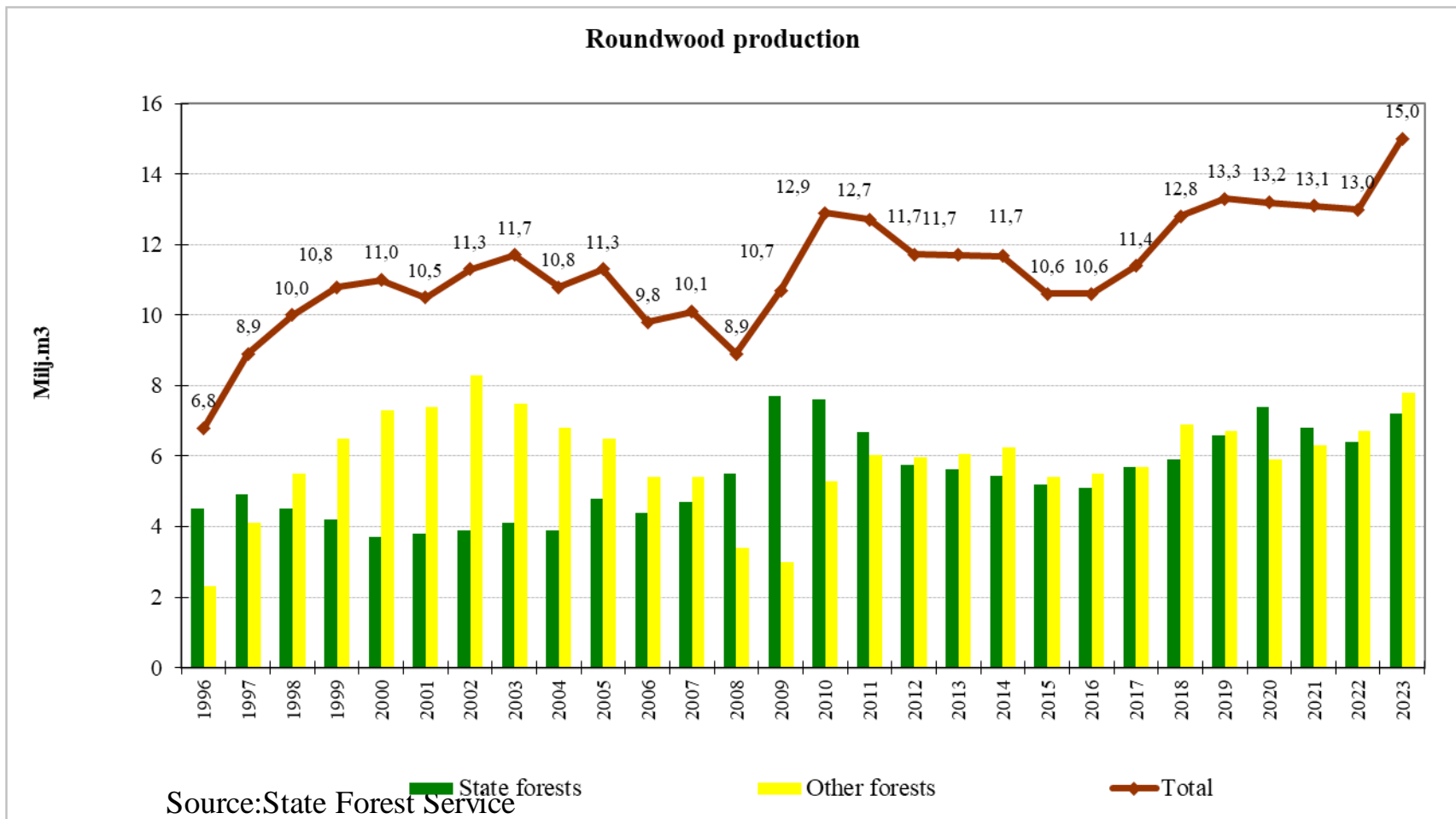
State owned 48%, municipalities 3%, private 49%.

Source: Latvian State Forest Research Institute "Silava"



Timber Felling Volumes in Latvia

Ministry of Agriculture
Republic of Latvia





Tree species and forest regeneration

Ministry of Agriculture
Republic of Latvia



Pinus sylvestris 34%

Betula pendula, pubescens 30%

Picea abies 18%

Alnus incana 7%

Populus tremula 7%

Alnus glutinosa 3%



Natural regeneration 68%

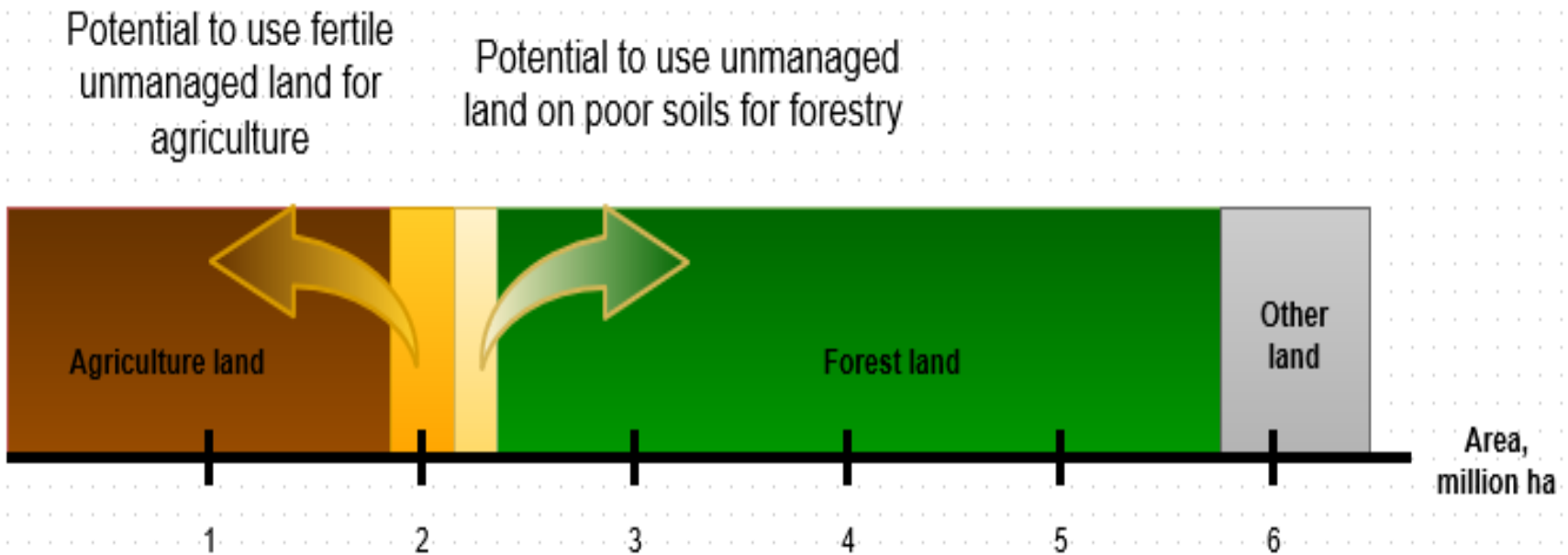


Seeding/planting 32%



Ministry of Agriculture
Republic of Latvia

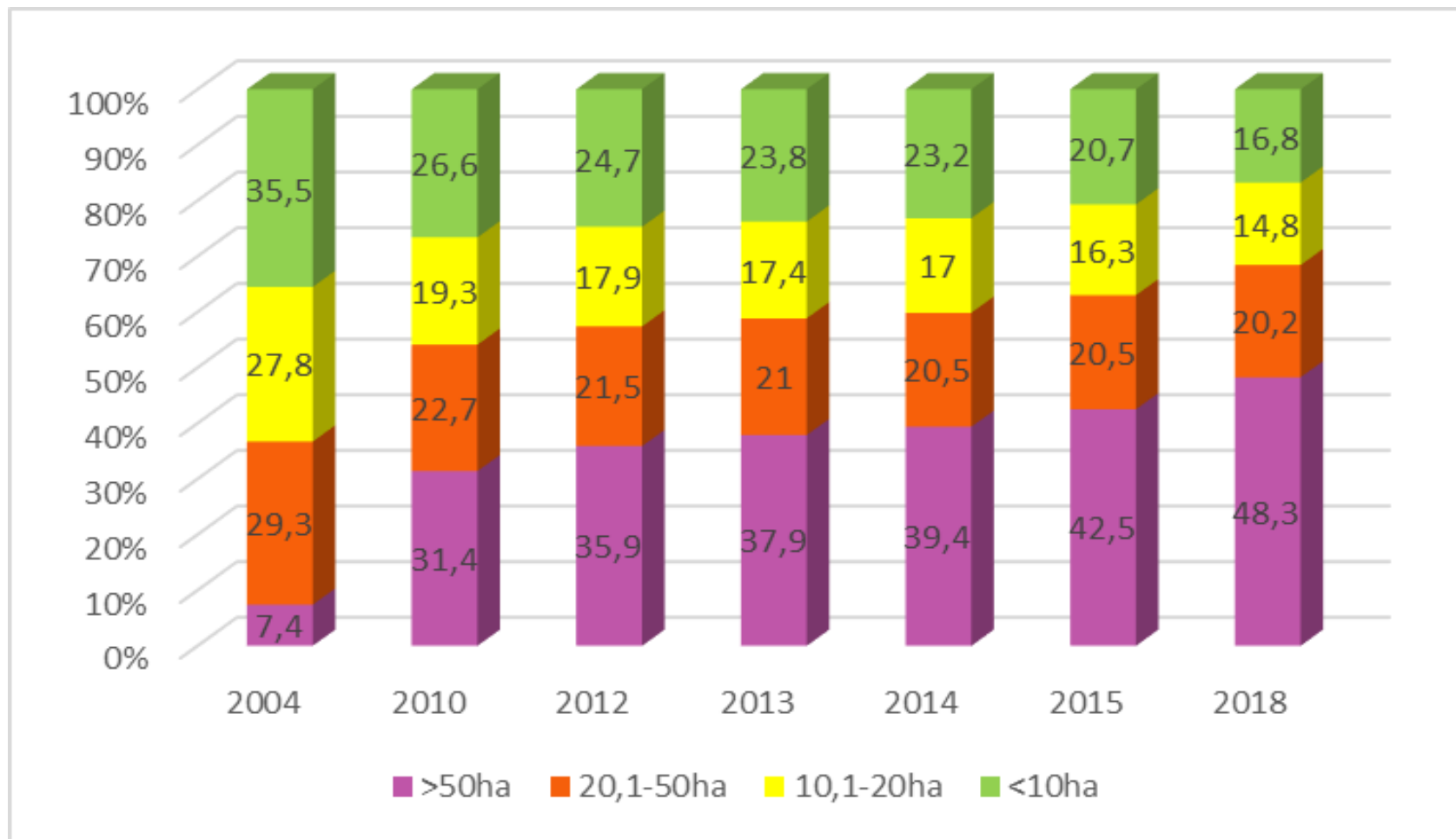
Land use challenge – potential to use unused agriculture land





Ministry of Agriculture
Republic of Latvia

Distribution of private forest properties by size classes (forest ownership monitoring)



Data source: State Land Service, Forest Research Institute Silava



Ministry of Agriculture
Republic of Latvia

Forest Policy

- Approved in 1998 by the Government as a result of long discussions among stakeholder organizations
- Main goal – Sustainable management of forest and forest land (definition H1)
- The task of the Forest policy - to balance society's interests by:
 - creating a favorable environment for **economic development**,
 - preserving the **ecological values** of Latvia's forest,
 - ensuring the **social functions** of forest, and optimizing legislation



Ministry of Agriculture
Republic of Latvia

Role of the State

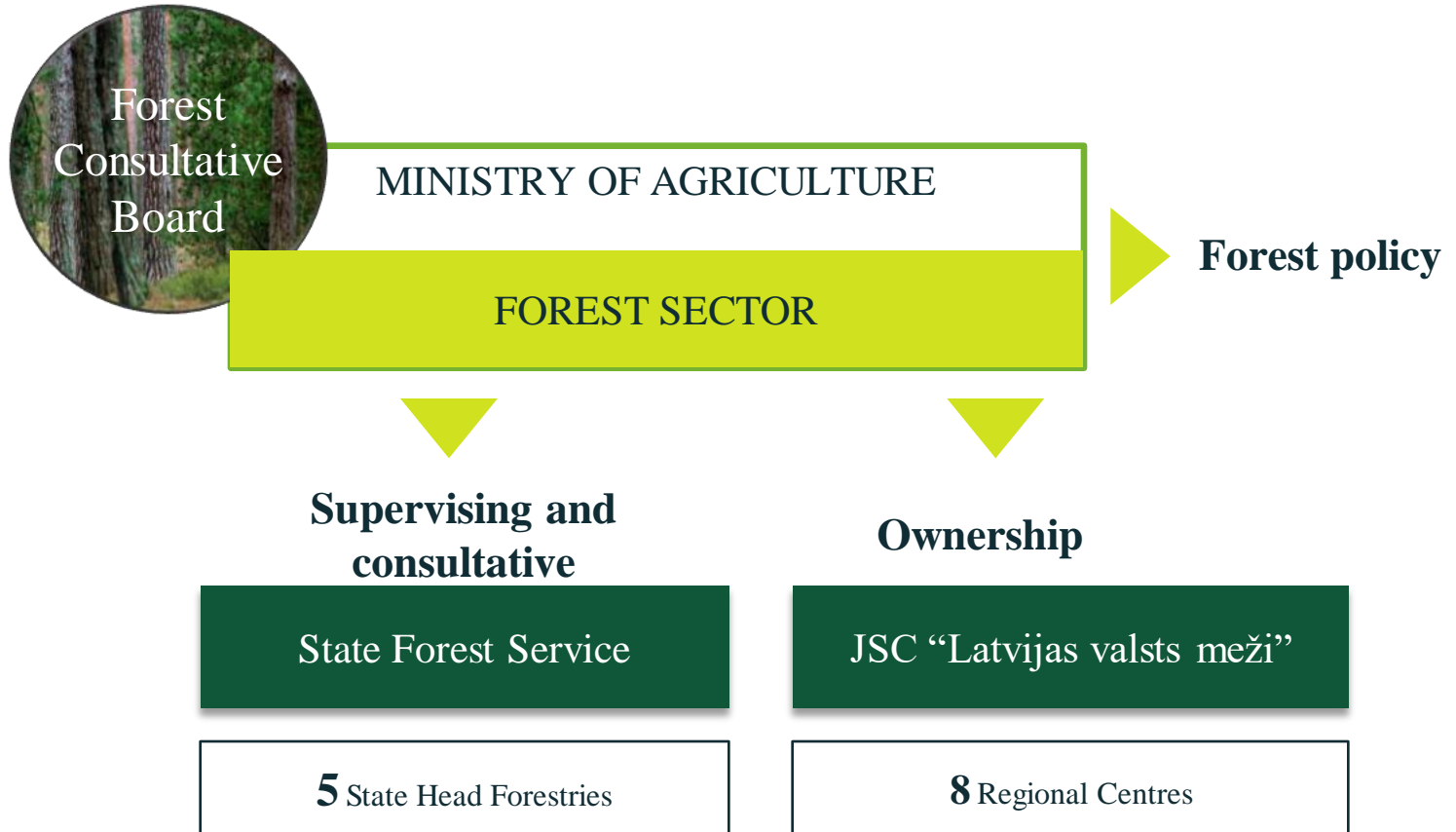
(as defined in the Forest Policy)

- Policy development – Ministry of Agriculture (Government)
- Enforcement of legislation – the State Forest Service (Government institution)
- Management of State owned forests – Joint Stock Company «Latvian State Forests» (commercial entity)
- Support functions – education, research, extension, state support for priority actions



Ministry of Agriculture
Republic of Latvia

Forest Sector Governance





Ministry of Agriculture
Republic of Latvia

Guidelines for the development of the forest and related sectors 2015- 2020 ... 2025-2032

Objectives of the forest sector development policy:

- Sustainable and internationally recognized forest management
- Competitive products with high added value
- Appropriate potential of education and science and skill level of human resources



Ministry of Agriculture
Republic of Latvia

Legal Framework for Forest Management

Equal requirements for all forest owners (for state forests maximum allowable timber harvesting volume is calculated, private forest owners have right to restrict access to their forests)

Forest Law – defines equal requirements for all forests

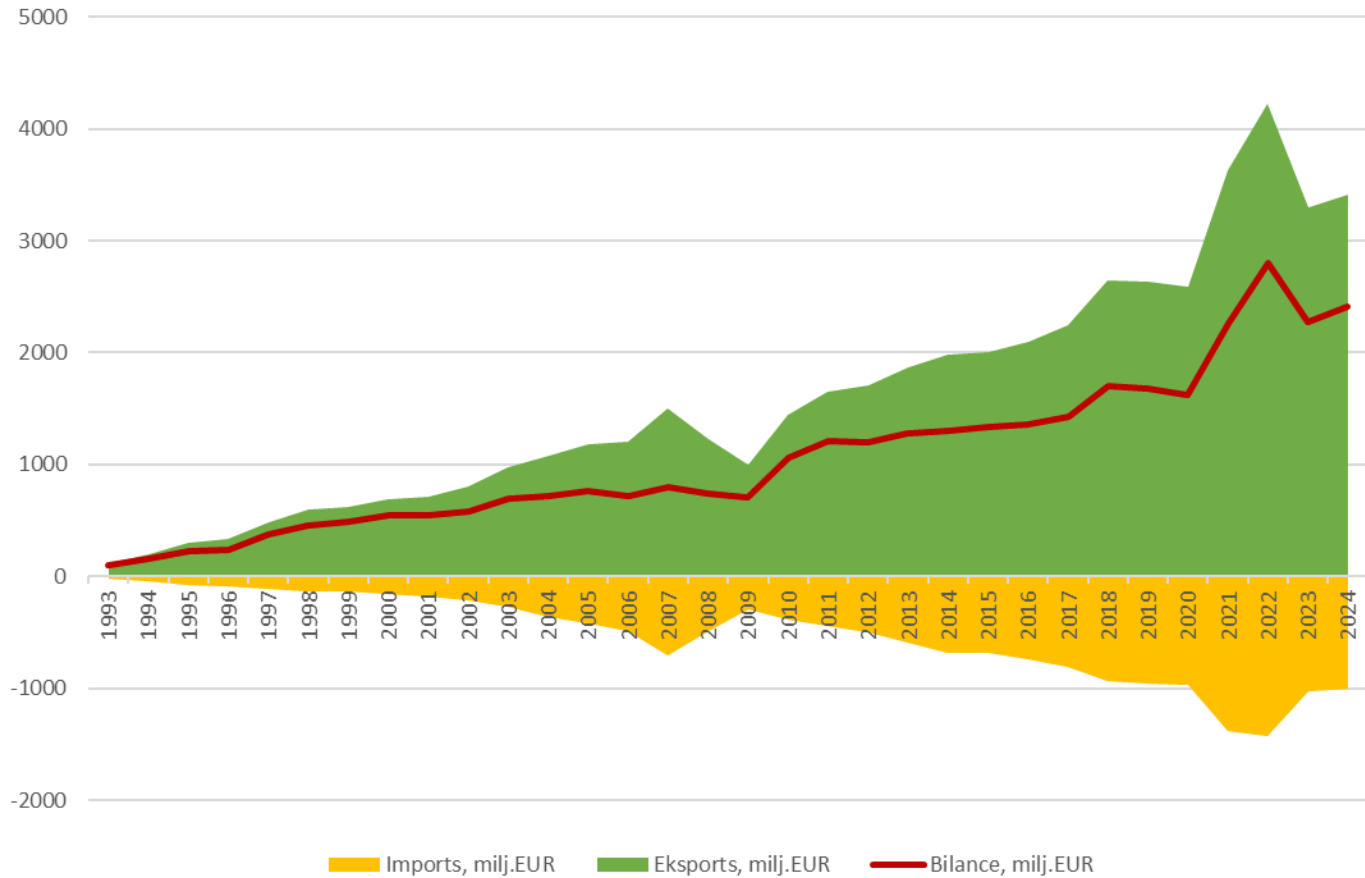
Regulations issued according to Forest Law on special issues such as tree felling, forest regeneration, forest reproductive material, nature protection in forest management, etc.

Other legal acts on nature protection influence forest management in specific areas



Ministry of Agriculture
Republic of Latvia

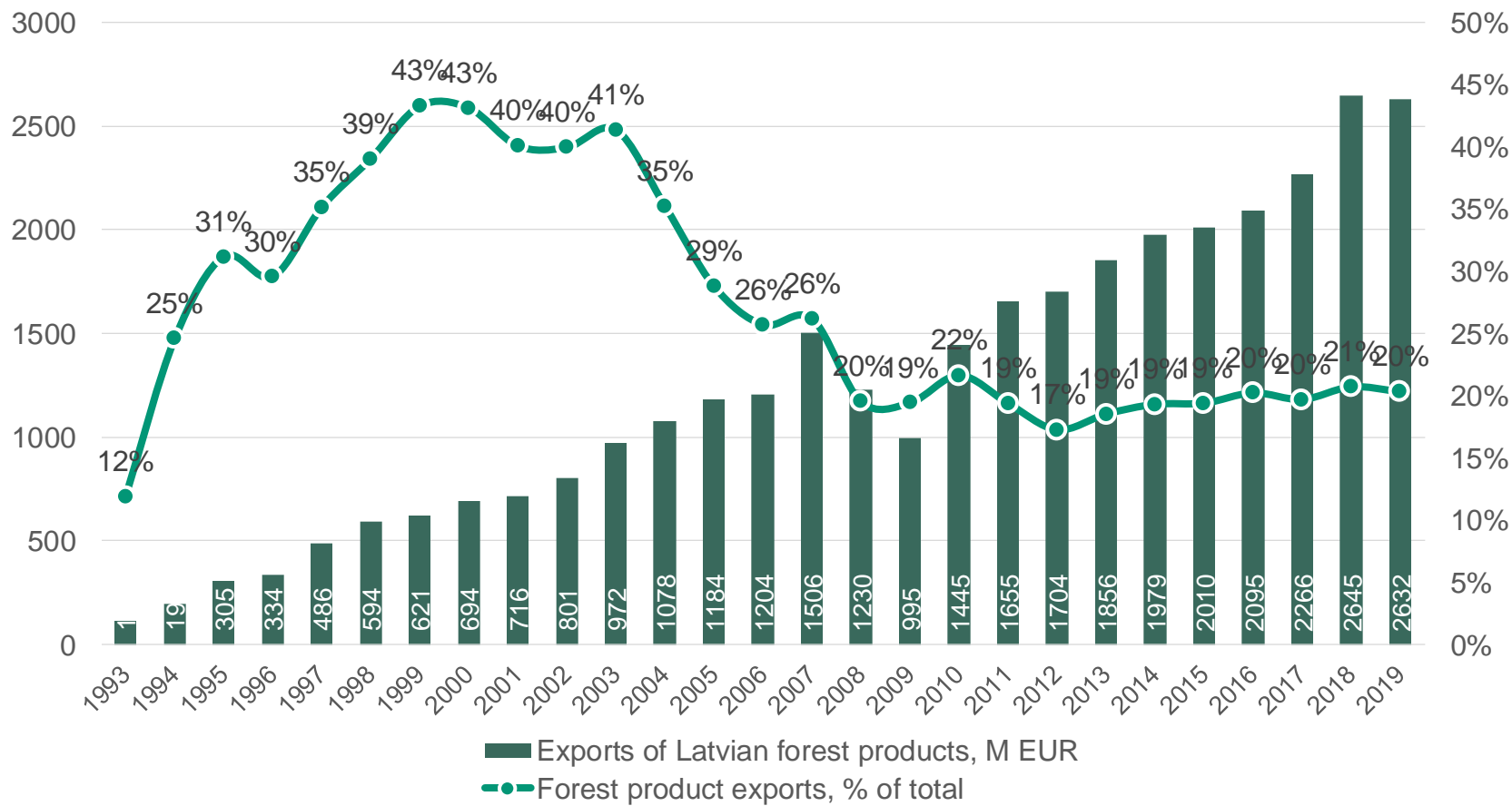
Forest sector export – import balance





Latvia's Forest Sector Share of Forest Products in the Total Exports of Latvia

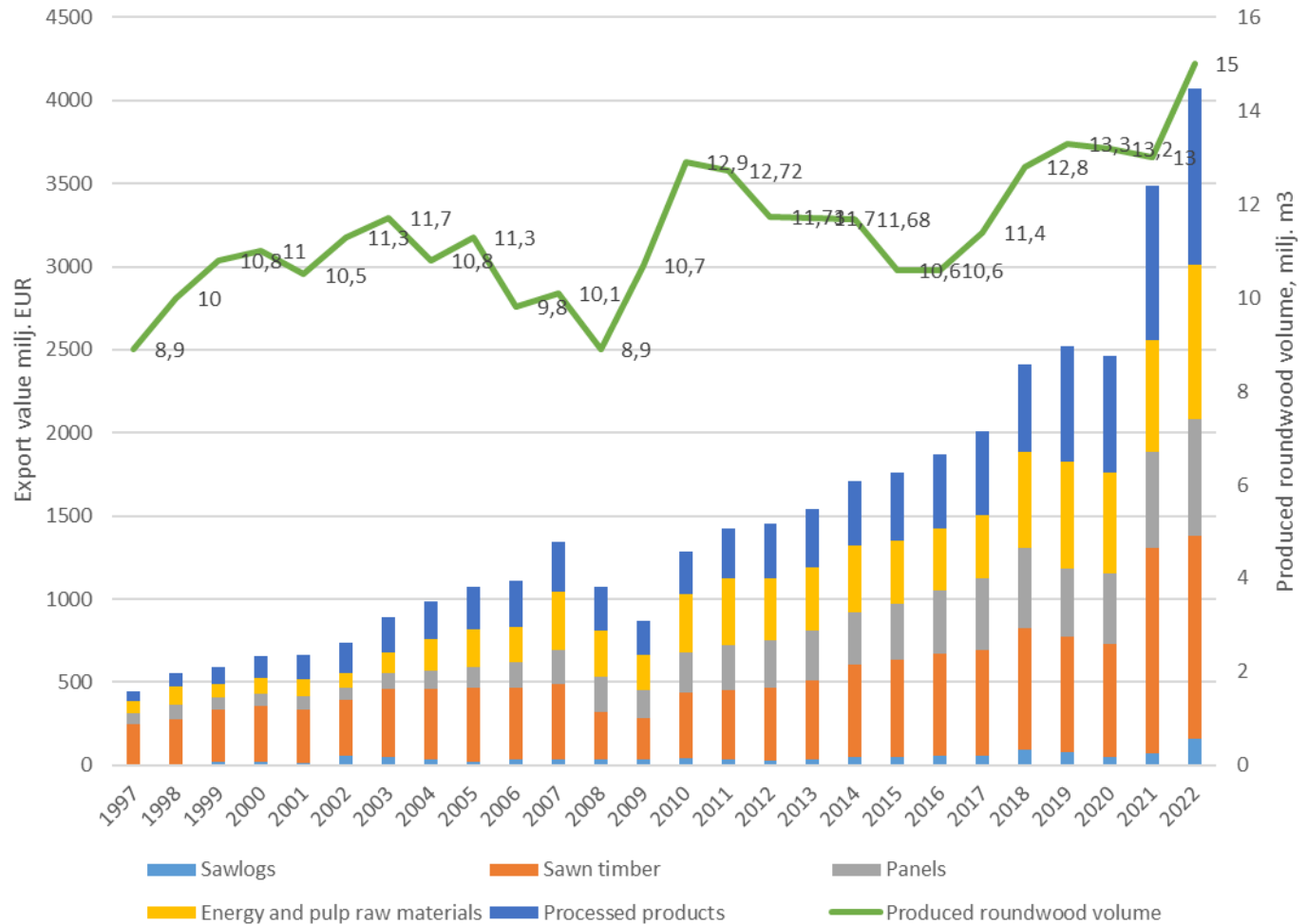
Ministry of Agriculture
Republic of Latvia





Ministry of Agriculture
Republic of Latvia

Economical aspect - Forest Industry Export, million Eur





Ministry of Agriculture
Republic of Latvia

Ecologic aspect of forests

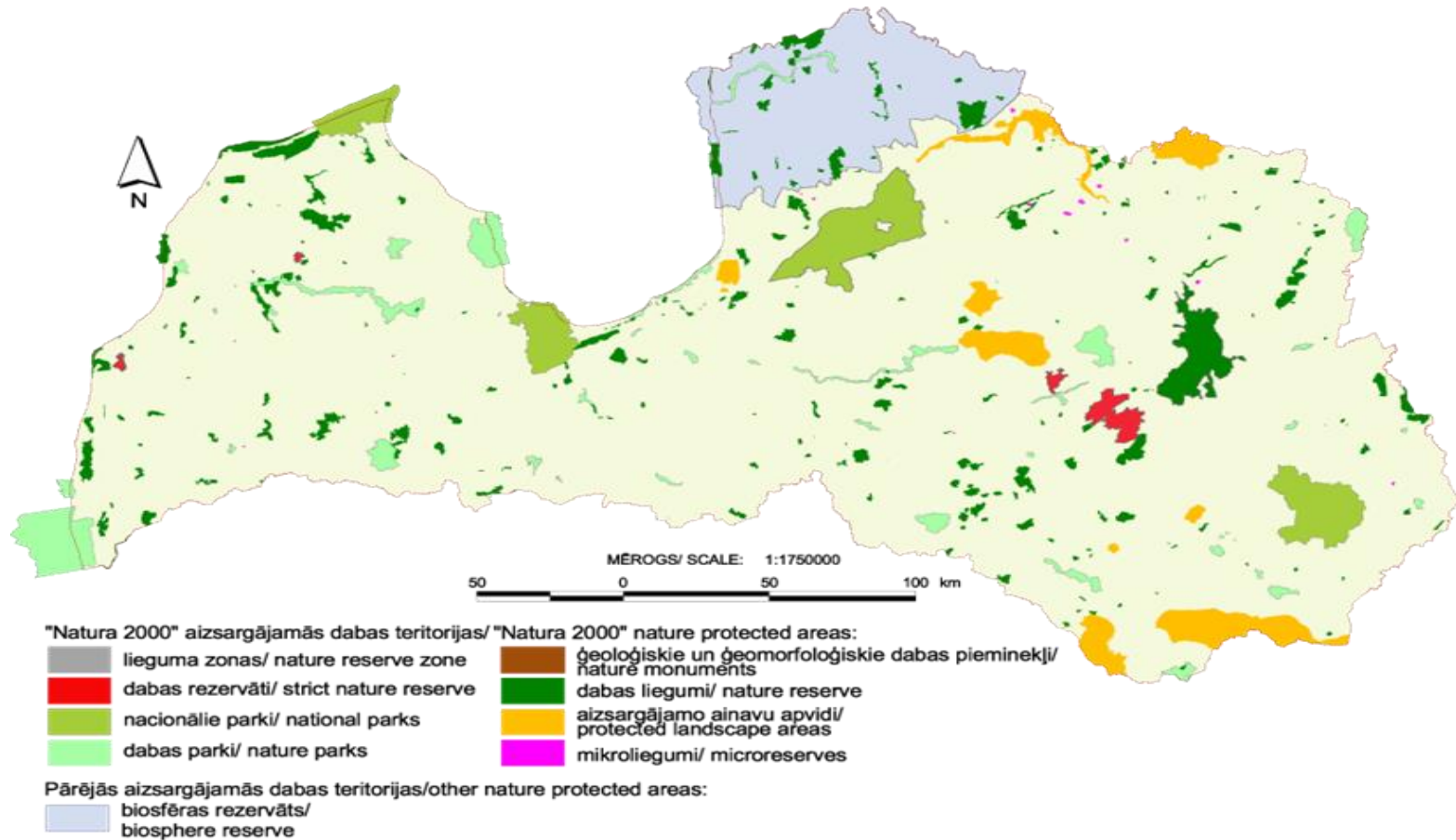


- Strict protection in forests 6-7%
- Important restrictions 14%
- 30% of forests are under different protection regimes.



Ministry of Agriculture
Republic of Latvia

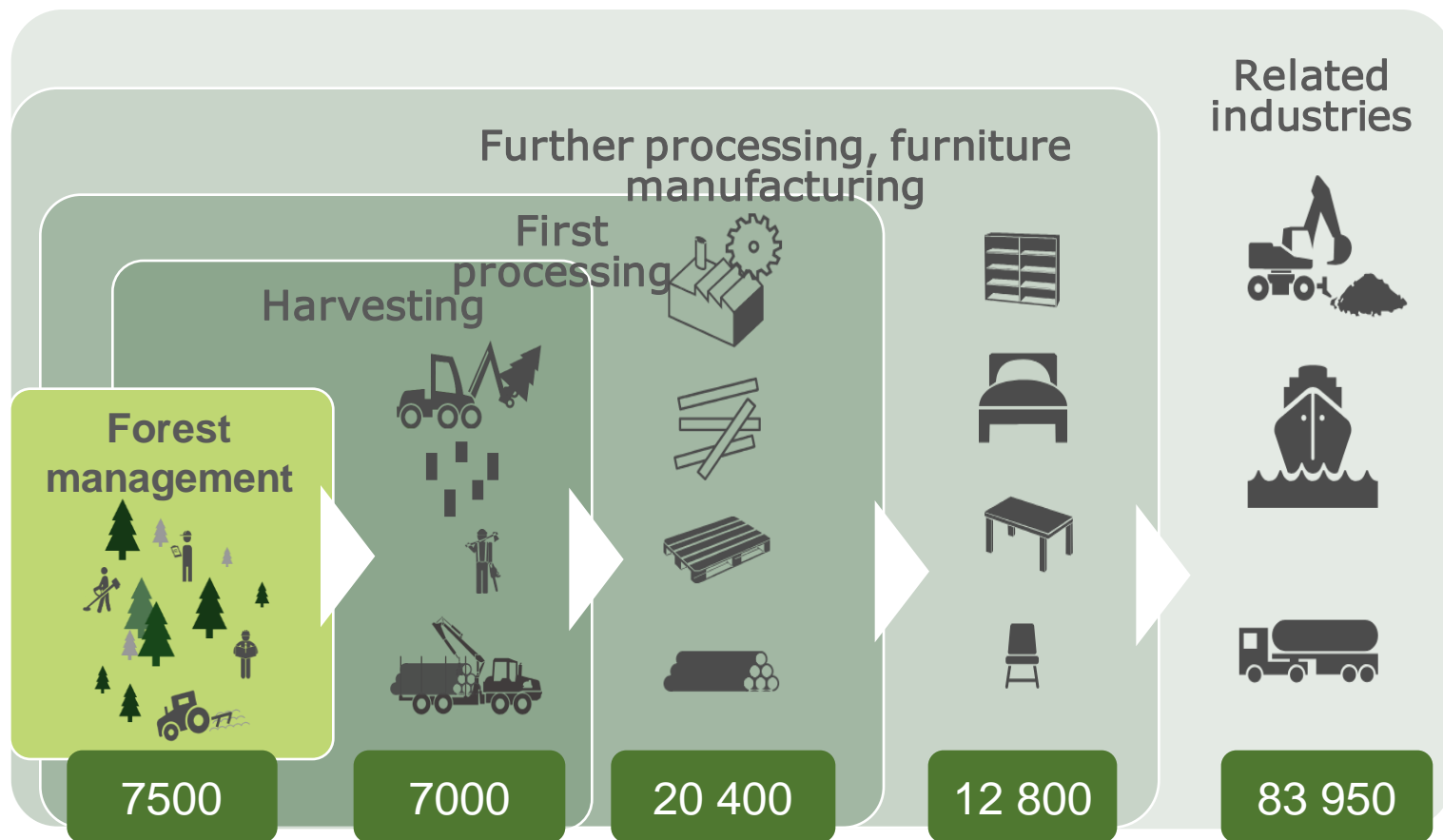
Ecologic aspect of forests





Ministry of Agriculture
Republic of Latvia

Social aspect of forest Jobs in the Forest and Related Industries





Ministry of Agriculture
Republic of Latvia

Social aspect of forest



**Value of non-wood goods ~100 million
Eur (87% used for self consumption)**



**Sport,
leisure
activities**



**Hunting related marketed services
dominate between marketed services
related to forest – total value ~37 million
Eur (27 million Eur related to hunting)**



Ministry of Agriculture
Republic of Latvia

Forest sector events

Forest Days in Latvia *Tradition from 1928*





Ministry of Agriculture
Republic of Latvia

Forest sector events

Golden Cone Awards Ceremony in the Forest Sector of Latvia (since 2004)





Ministry of Agriculture
Republic of Latvia

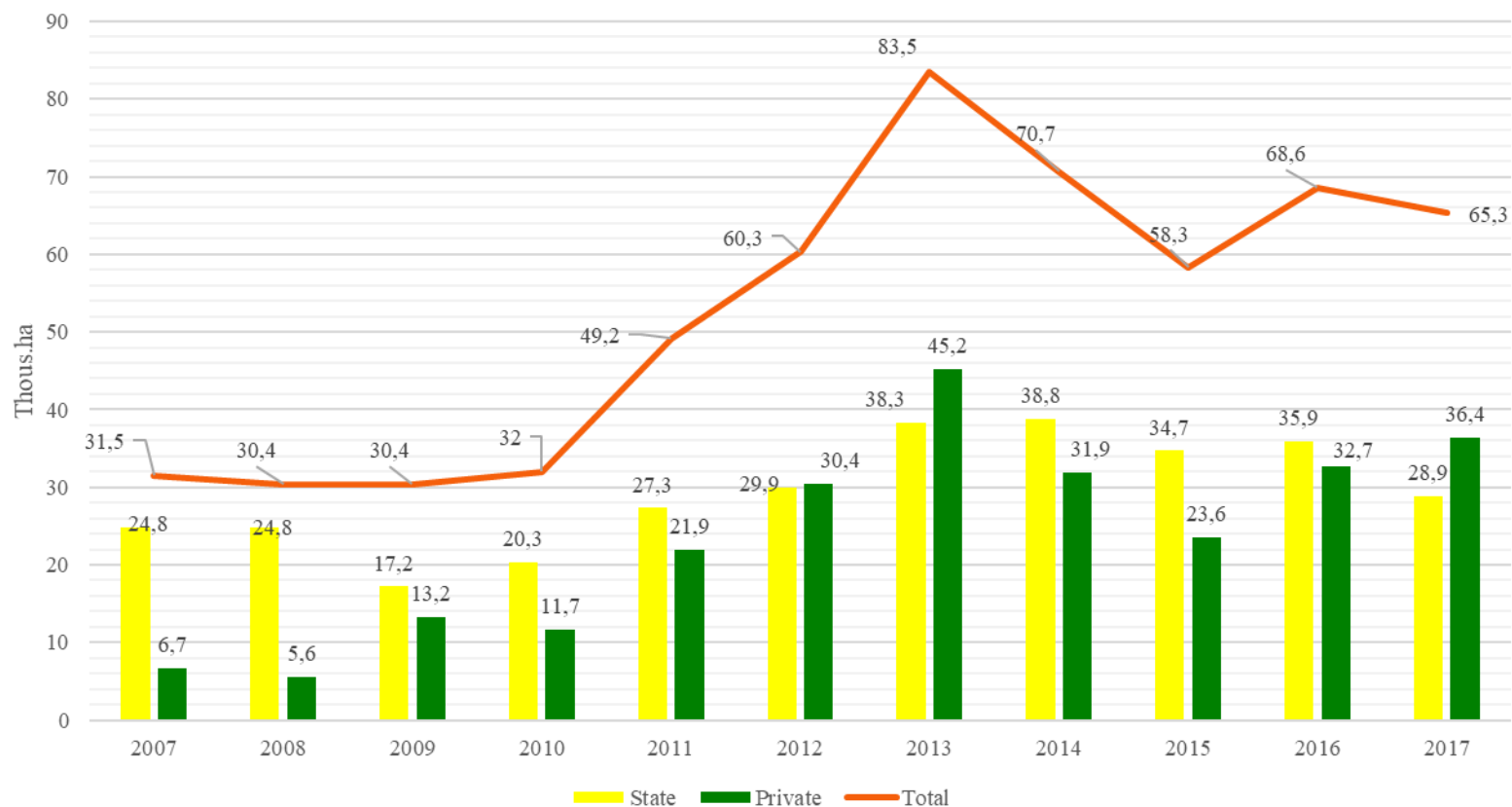
Forestry measures under the Common Agriculture Policy strategy (state and EU support)

- Afforestation
- Restoration of damage to forests from forest fires and natural disasters and catastrophic events
- Thinning of young forest stands
- Replacement of non-productive stands



Ministry of Agriculture
Republic of Latvia

The amount of thinned young forest stands



Data source: State Forest Service



Ministry of Agriculture
Republic of Latvia

Other CAP strategic plan measures related to forestry

- Support for the renovation or reconstruction of drainage systems (development of infrastructure under the measure – Investments in physical assets)
- Support for advisory services
- Support for knowledge transfer
- Support for producer groups
- Support for cooperation
- Natura 2000 payment



Ministry of Agriculture
Republic of Latvia

Hunting in Latvia

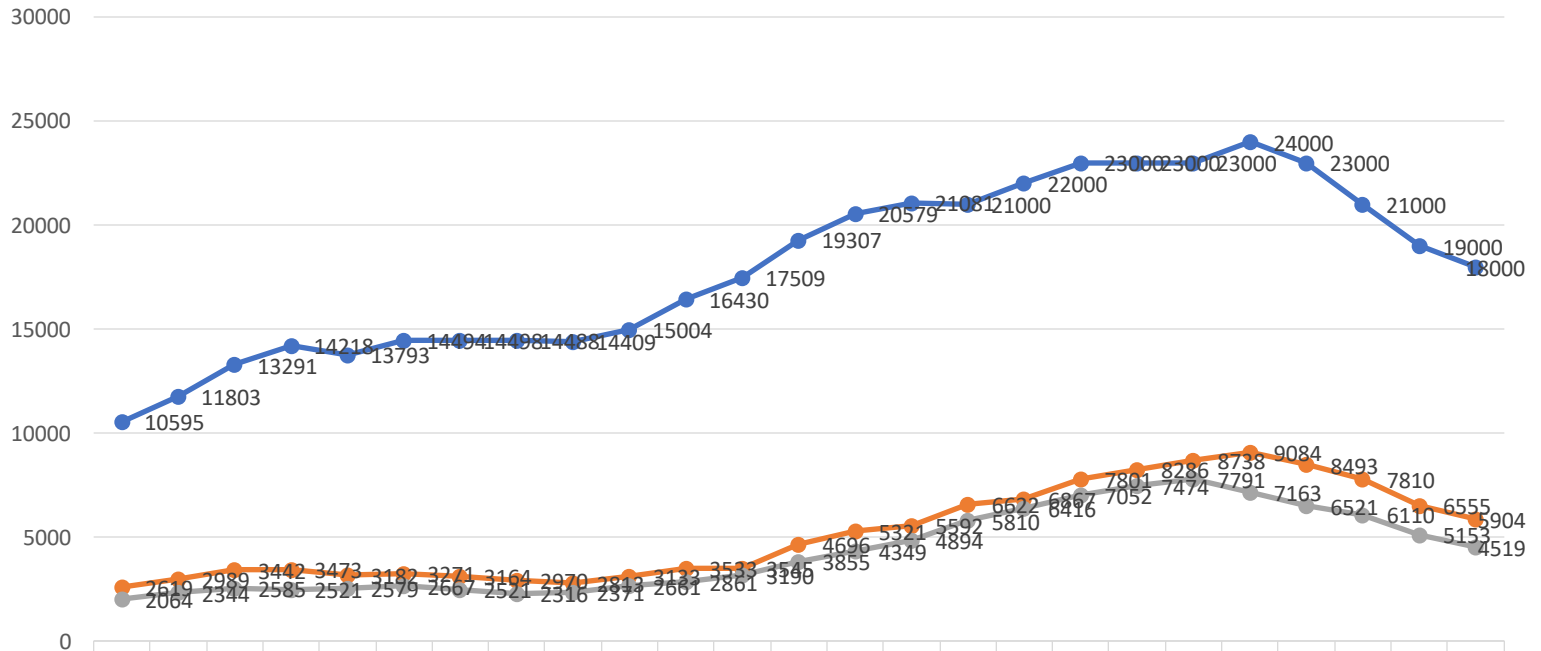
- Law on Hunting and the regulations on hunting – lays down principles to provide sustainable management of hunting resources
- Hunting rights belong to a land owner or legal possessor who has hunting areas in the land parcel
- Hunting is organized on hunting districts.
- Game animals - mammals and birds living in the wild which are limited or unlimited for the hunting.
- Limited – game animals – elk, red deer, roe deer, wild boar, wolf, capercaillie and black grouse.
- Unlimited – for example fox, badger, marten, beaver, several species of ducks and geese.



Ministry of Agriculture
Republic of Latvia

Elk population development in Latvia

Aļņu (*Alces alces*) skaita dinamika Latvijā



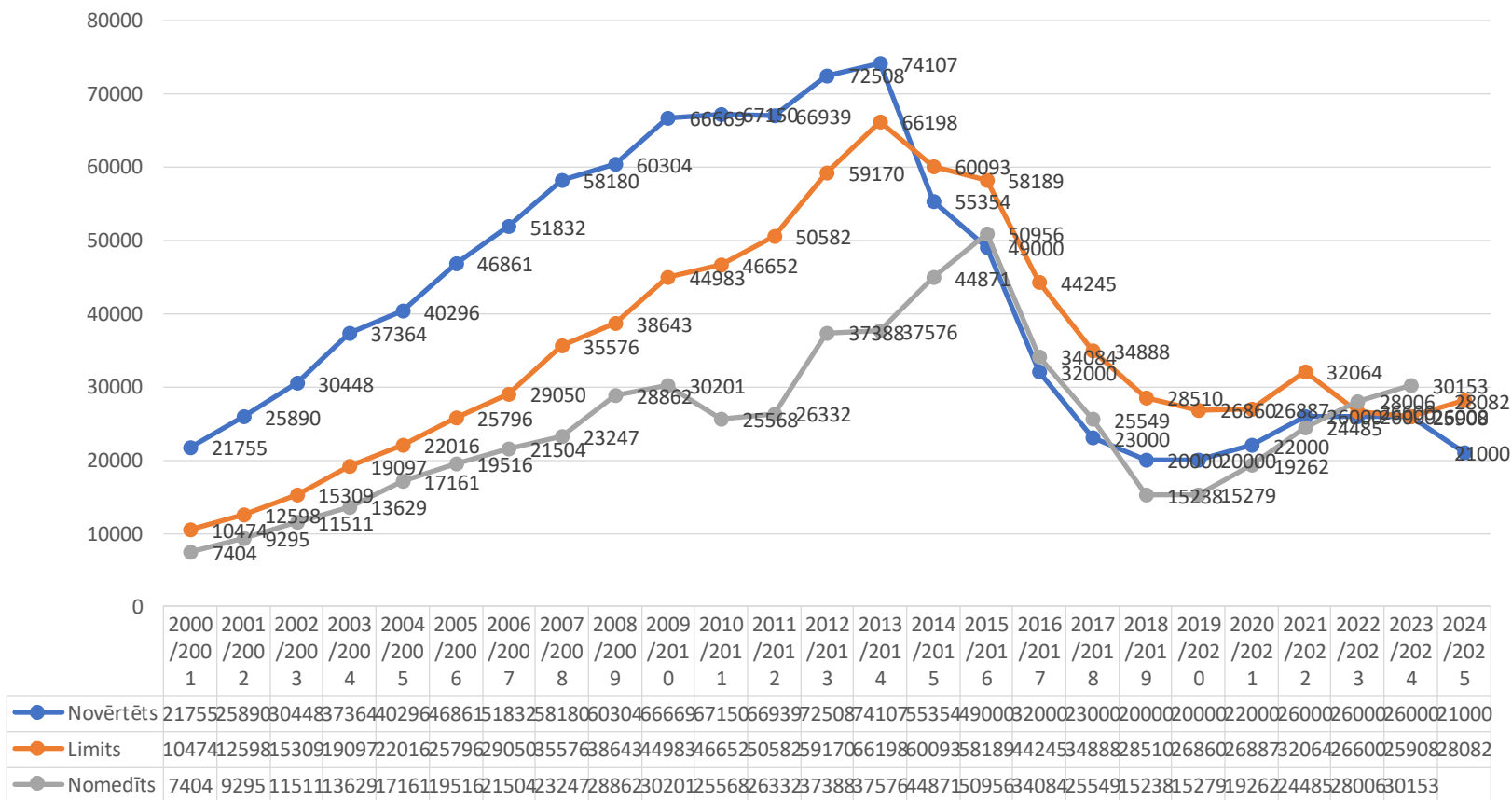
	2000	2001	2002	2003	2004	2005	2006	2007	2008	2009	2010	2011	2012	2013	2014	2015	2016	2017	2018	2019	2020	2021	2022	2023	2024
	/200	/200	/200	/200	/200	/200	/200	/200	/200	/201	/201	/201	/201	/201	/201	/201	/201	/201	/201	/202	/202	/202	/202	/202	/202
	1	2	3	4	5	6	7	8	9	0	1	2	3	4	5	6	7	8	9	0	1	2	3	4	5
Novērtēts	10595	11803	13291	14218	13793	14494	14498	14488	14409	15004	16430	17509	19307	20579	21081	21000	22000	23000	23000	23000	24000	23000	21000	19000	18000
Limits	2619	2989	3442	3473	3182	3271	3164	2970	2813	3133	3533	3545	4696	5321	5592	6622	6867	7801	8286	8738	9084	8493	7810	6555	5904
Nomedīts	2064	2344	2585	2521	2579	2667	2521	2316	2371	2661	2861	3190	3855	4349	4894	5810	6416	7052	7474	7791	7163	6521	6110	5153	4519



Ministry of Agriculture
Republic of Latvia

Wild boar population development in Latvia

Mežacūku (*Sus scrofa*) skaita dinamika Latvijā

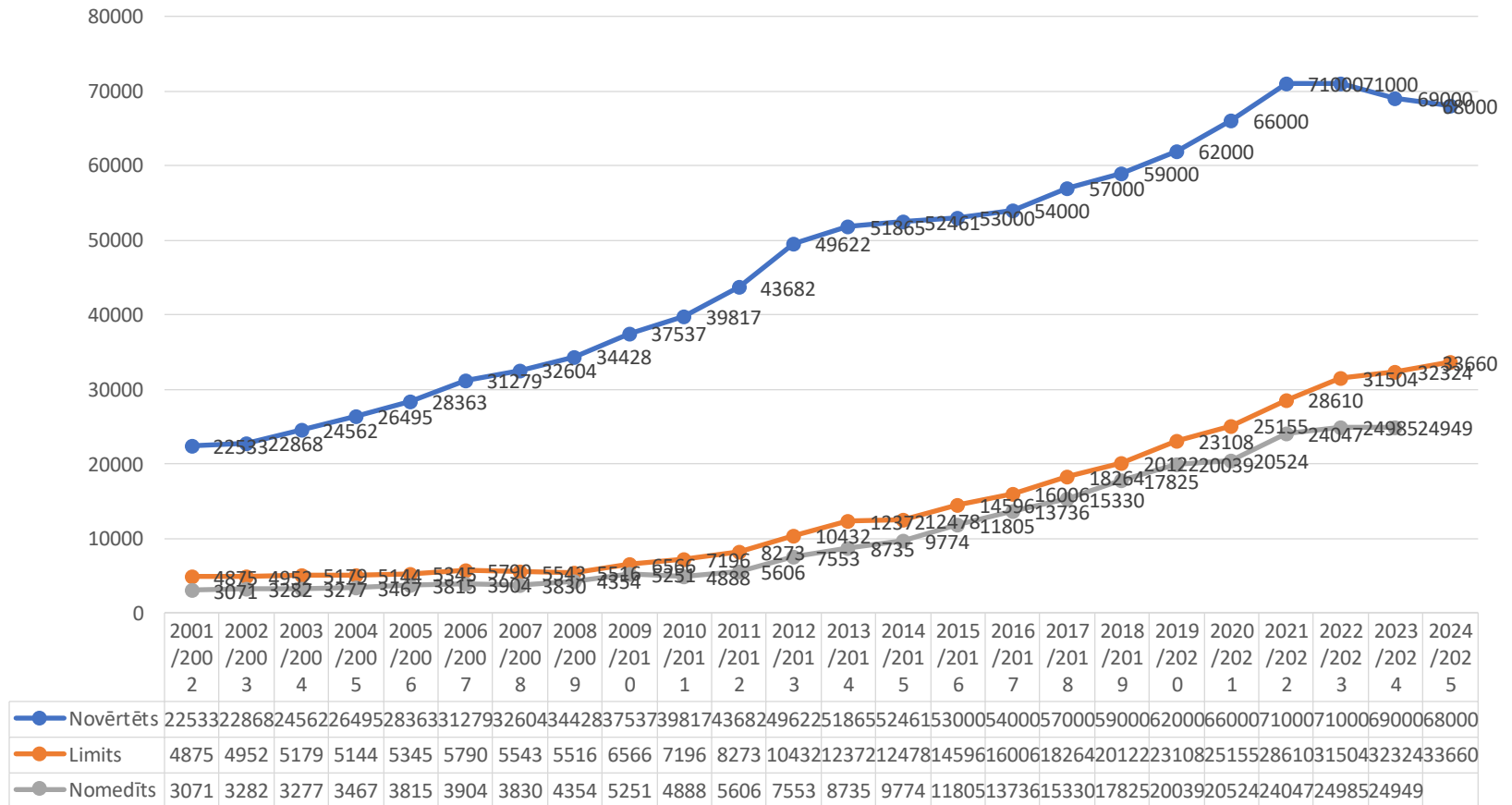


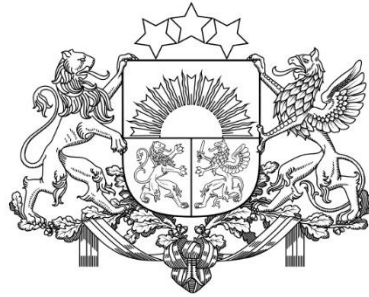


Ministry of Agriculture
Republic of Latvia

Red deer population development in Latvia

Staltbriežu (*Cervus elaphus*) skaita dinamika Latvijā





Ministry of Agriculture
Republic of Latvia

Thank you for your attention!

Normunds Struve
Forest Department
E-mail: Normunds.Struve@zm.gov.lv